



SEPT 2ND TO SEPT 5TH, 2025

LOIS E. HOLE

HORNET WEEKLY

THE WEEK AHEAD OF US...

Monday

- W.O.W. Assembly 10:00–11:00 am

Tuesday

- AM Kinder Safety on Board In Class Field Trip. 9:00 – 11:30am
- New Students Milk and Cookies for New Students .10:40 – 11:10am
- Running Club 12:10 – 1:10pm
- ALL Day Kinder Safety on Board In Class Field Trip. 1:00 – 2:30pm

Wednesday

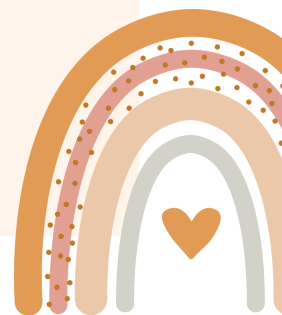
- Corn Roast. 10:00 – 11:30am
- Cross Country Fun Run at Sir Alexander Mackenzie . 4:00 – 5:00pm

Thursday

- Picture Day 9:00am – 3:00pm
- Running Club 12:10 – 1:10pm
- Meet the Staff Night. 5–7:00 pm

Friday

- Dallas Arcand Assembly . 2:00–3:00pm





Of Particular Note:

- Student Safety is of utmost importance to all staff at LEH. A large part of ensuring student safety is parent engagement. Please pay attention to no parking areas during the day. A reminder that the bus lane in front of the school is a No Stopping/Parking Zone from 8:30 a.m. – 4:00 p.m. on school days. Parent parking is available on Everitt Drive, or in our Kiss & Go through lane.
- We understand that the Kiss & Go Lane is a very busy area at the end of the school day. There is no parking on the right side of the lane as you enter the Kiss & Go, and we ask that parents move up the lane as space becomes available so Everitt Drive traffic is not blocked. Please be kind and patient with our Staff Supervisors as they work to assist students to safely meet up with their Parents in the Kiss & Go Lane.
- Late Student Drop Off/Early Student Pickup: If your child is arriving late to school, please enter through the front doors. Please ring the Admin doorbell for the front office, and have your child check in with the office before proceeding to their classroom. For early pickups, please call from your vehicle or ring the doorbell and enter the office. Students will remain in their classroom until you have arrived. Please use the SIGIS doorbell for all childcare drop-offs and pick-ups. .

- **Roots of Empathy**

We are excited to once again offer the Roots of Empathy program to our Grade 3 students. To make this possible, we are currently looking for two families who would be willing to share their little one with us.

The commitment involves bringing your baby—born in June or July 2025—to the classroom once a month for a visit, and coordinating with one of our wonderful program facilitators.

To learn more about Roots of Empathy, please view the program information [Roots of Empathy](#).

If you're interested or have any questions, please contact Cindy Jeffery at cindy.jeffery@spschools.org.

- **Meet The Staff Night**

Meet the Staff Night will be held Thursday evening from 5:00 – 7:00 p.m. Staff will be in their classrooms to say Hi. We have also invited a few food trucks to be onsite for you to purchase a sweet treat if you like.

- **Volunteers needed for Corn Roast**

We're looking for volunteers to help with the corn roast .We need hands to help with setting up the event , cooking the corn and distributing the delicious results to the students !

When: Wednesday, September 10th, 8:30am – 12:10pm

If you're available to lend a hand please RSVP to Tammy Schepens atammy.schepens@spschools.org.

- **Save the Date**

Parent Council & Friends of LEH are starting up their meetings again September 22nd. All parents are welcome. The meetings take place in the staff room at LEH starting at 7:00 p.m. **Parent Council Meeting 7–8pm , Friends of LEH Info 8–9:00pm**

